

Go hunting for treasure

in your local park

# Geocache locations



# Calderstones Park, Liverpool



#8 - code: OK040D  
"Hide and Hedge-udice"

#9 - code: OK040E  
"Hardy to find"

#10 - code: OK040F  
"The Big Friendly Geocache"

#11 - code: OK0410  
"Geo cache 22"

#12 - code: OK0412  
"Our Secret Garden"

# Everton Park, Liverpool



#1 - code: OK0413  
"Treasure at May Duncan's"

#2 - code: OK0414  
"Poplar Central"

#3 - code: OK0415  
"Around the Maypole"

#4 - code: OK0416  
"Sweet Chesnut"

#5 - code: OK0417  
"View of the old Camping Field"

#6 - code: OK0418  
"Red Rock Ravine"

#7 - code: OK0419  
"X marks the spot"

# Croxteth Hall Park, Liverpool

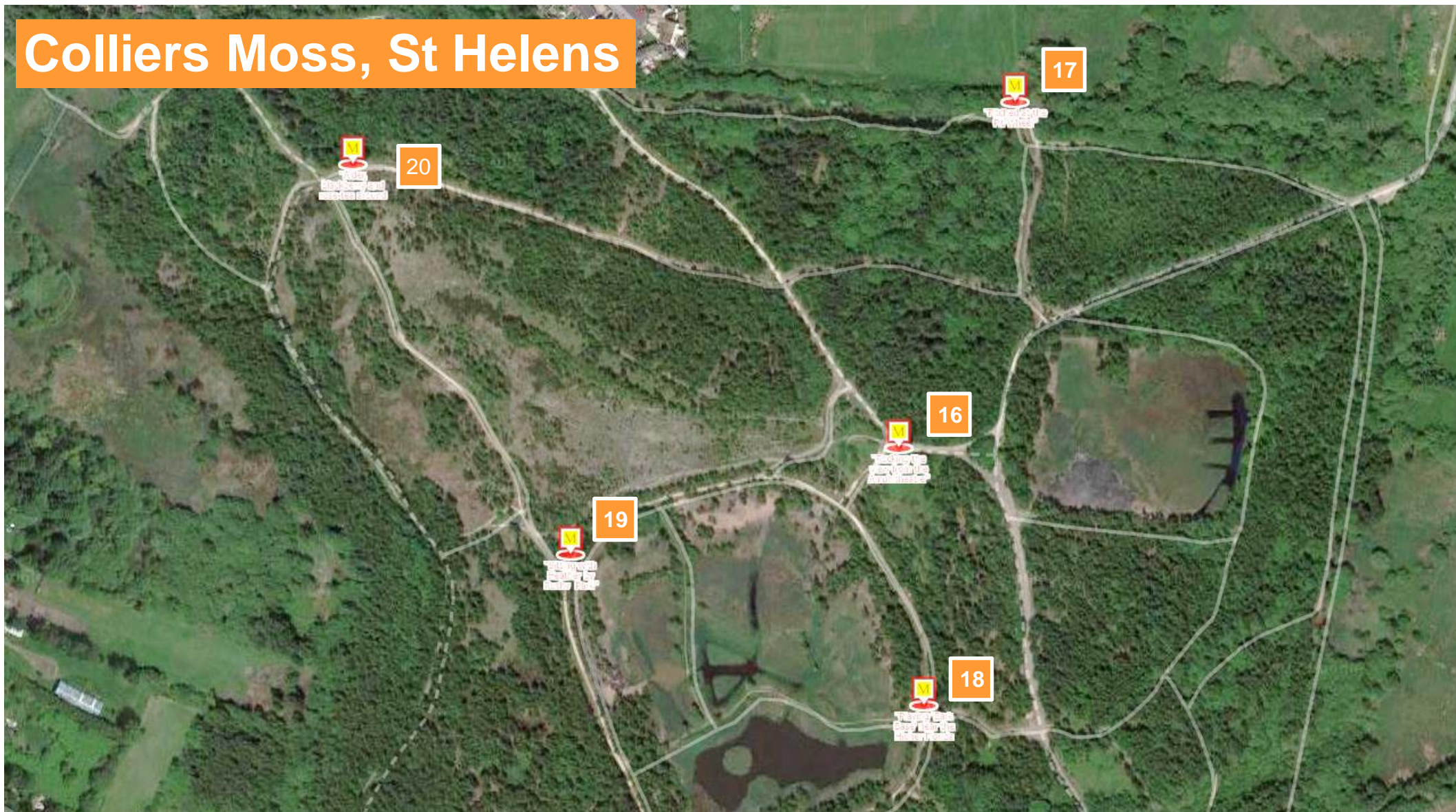


#13 - code: OK040A  
“Protected by the Three Sisters”

#14 - code: OK040B  
“We Moo- Depths of Dam Wood”

#15 - code: OK040C  
“Basking in Cowies Meadow”

# Colliers Moss, St Helens



#16 - code: OK0405  
"Rocking the view from the Amphitheatre"

#17 - code: OK0406  
"Pitched at the Pit Wheel"

#18 - code: OK0407  
"Playing 'Bark Base' near the Higher Florida Stone"

#19 - code: OK0408  
"Sitting with Heather by Rushy Park"

#20 - code: OK0409  
"Alder, blackberry and rose-tea around the Strata Bunker"

**Geocaching is a great way to enjoy being outside in The Mersey Forest discovering somewhere new, getting fitter and enjoying the thrill of the hunt!**

**Geocaching is an outdoor treasure-hunting game in which the participants (Geocachers) use a Global Positioning System (GPS) receiver (such as a mobile phone) to hide and seek containers (called "geocaches" or "caches"). It's a treasure hunt updated for our digitally connected world. Read this [Beginners Guide](#) for more on how it works.**

**Geocaches have been placed around these four sites in the Liverpool City Region by the community groups:**

- **The Reader Organisation (Calderstones Park)**
- **Cass Foundation**
- **Friends of Colliers Moss**

**Share your hunt and pictures with us on twitter via @MerseyForest, @MerseysideSport and #Nature4Health**

**For further information about how to log your Geocaches please visit the Discover the Mersey Forest website at [www.merseyforest.org.uk/things-to-do/geocaching](http://www.merseyforest.org.uk/things-to-do/geocaching).**