

## The Mersey Forest - 20 years on

Paul Nolan  
Project Director  
The Mersey Forest

# Overview

- Where is The Mersey Forest?
- Why was it set up?
- What do we do?
- 20 years on - progress?
- A look ahead



- **Where is The Mersey Forest?**

- Why was it set up?
- What do we do?
- 20 years on - progress?
- A look ahead





- Where is The Mersey Forest?
- **What is it and why was it set up?**
- What do we do?
- 20 years on - progress?
- A look ahead







Map created from the Ordnance Survey mapping with permission of Her Majesty's Stationery Office © Crown Copyright. Unauthorised reproduction infringes the Crown Copyright and may lead to prosecution or civil proceedings. TMF Licence No. 100031461



- 30 year plan
- Partnership
- Team
- Delivery through programmes and projects



# Why?

- Low tree cover
- Socio-economic problems
- Large areas of derelict and underused land
- Loss of connection between people and landscape
  - Forest Plan based on landscape assessment
- Forestry as a lower cost option for land regeneration
- Forestry able to deliver multiple benefits

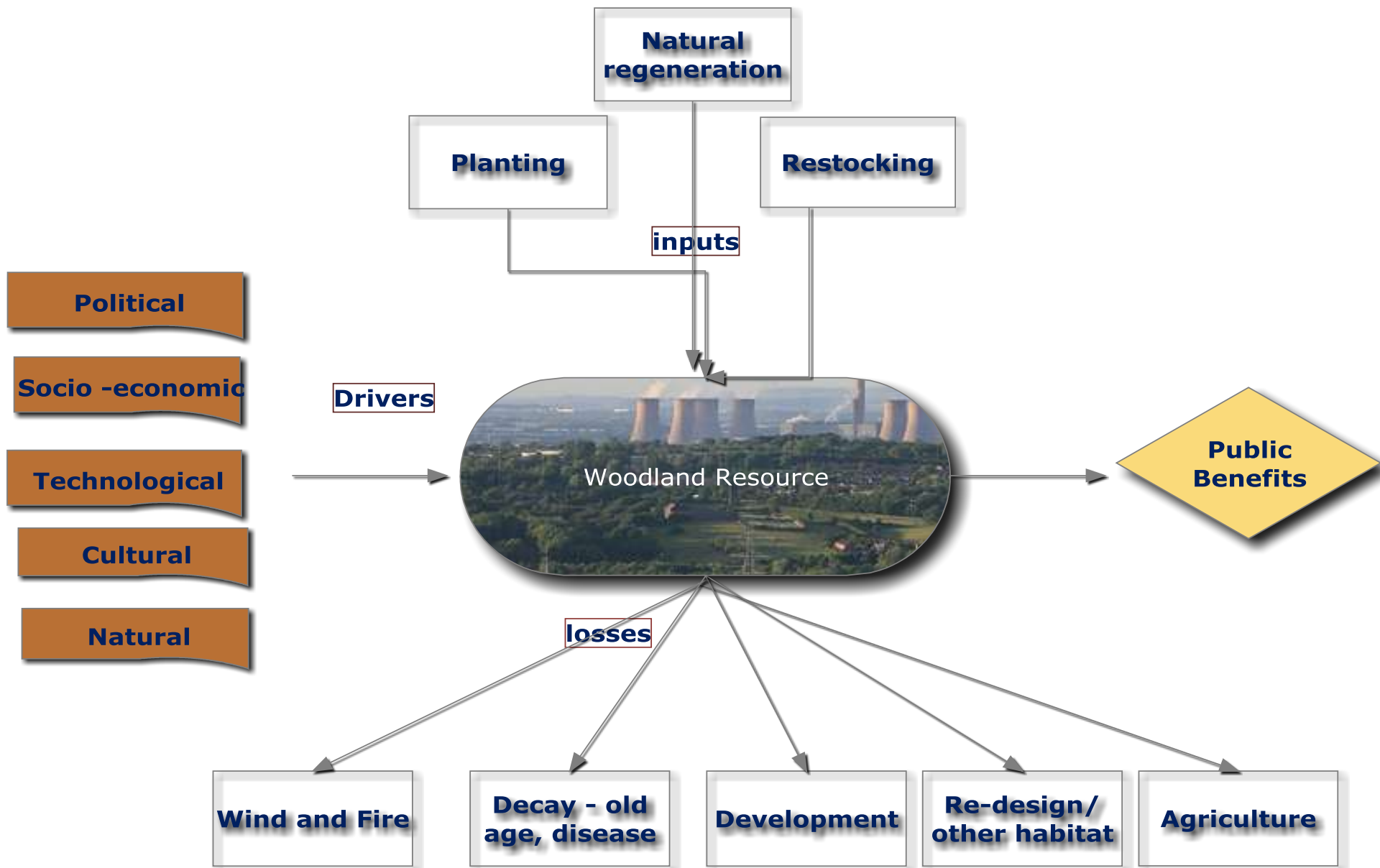
- Where is The Mersey Forest?
- Why was it set up?
- **What do we do?**
- 20 years on - progress?
- A look ahead



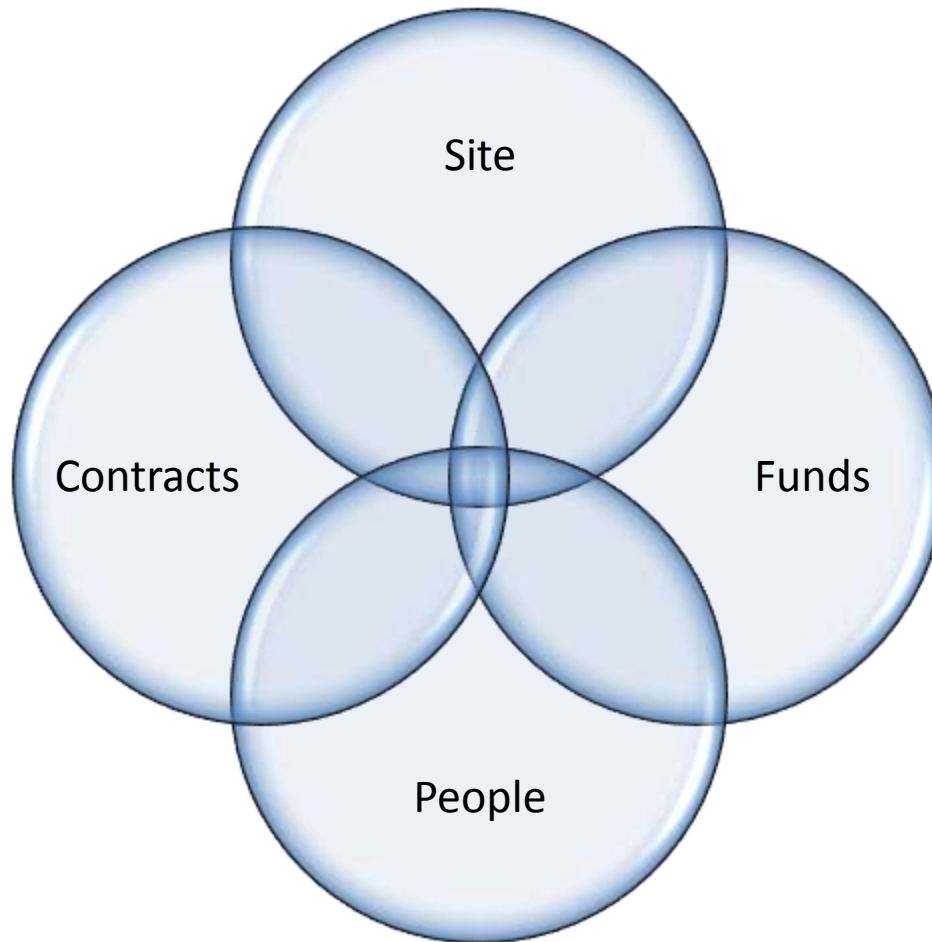




- Land
- Communities
- £
- Communicate
- Research
- Influence policy




# How?



# Bring it all together - and get out of the way!



# Levels of involvement within The Mersey Forest

- 
- **Ownership**
  - **Stewardship**
  - **Active practically**
  - **Active in consultation**
  - **Involvement in events**
  - **Understanding about the Forest**
  - **Not involved but recognising The Forest**





- Where is The Mersey Forest?
- Why was it set up?
- What do we do?
- **20 years on - progress?**
- A look ahead



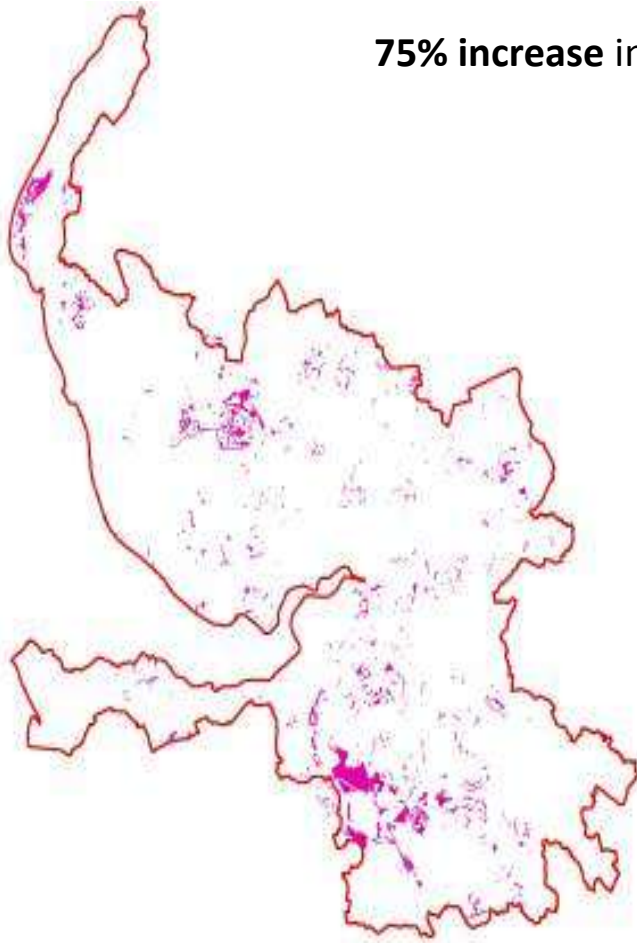


# Progress

- 9 million trees
- 2750 ha of new forest
- 75% increase in woodland cover
- 3000ha in management
- 2500ha of other habitat created
- 160 new jobs
- Increased use of wood and timber from local sources
- 5 PhD's
- £60 m of new investment into community forestry

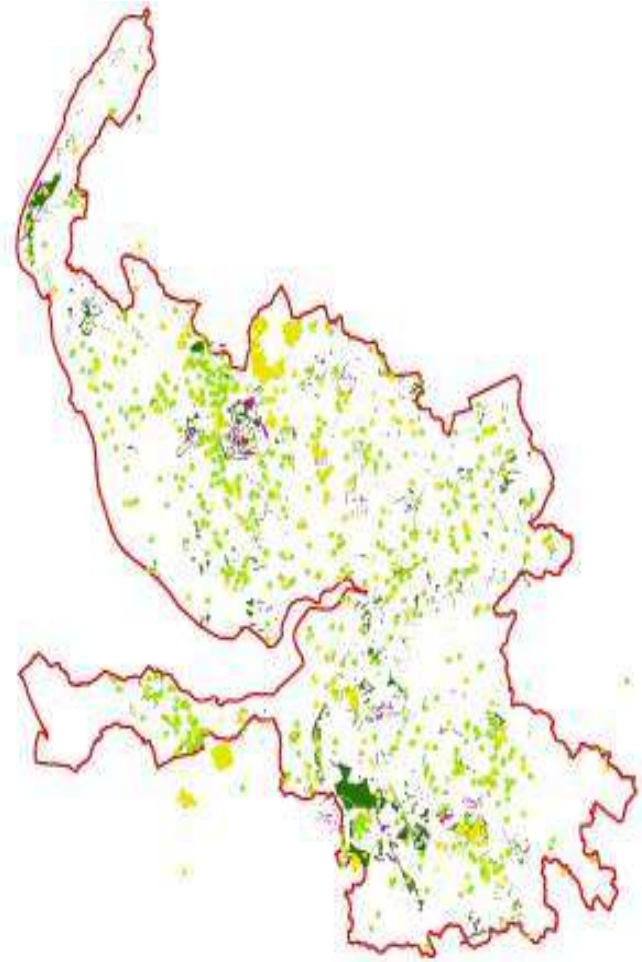


## Woodland 1992



75% increase in woodland

## Woodland 2011



- 94% of people support The Mersey Forest
- 64% say that their environment has improved as a result of Mersey Forest
  - That's >1m people
- 85% said planting more woodland trees should be a very high priority
- 56% thought planting more street trees should be a very high priority





# What communities say

- *“It's a vast improvement on what it was before. They've reclaimed the colliery site, which was an eyesore, and now they've got the dream and it's an asset to the area.”*



*"Fantastically diverse habitat so close to a town"*

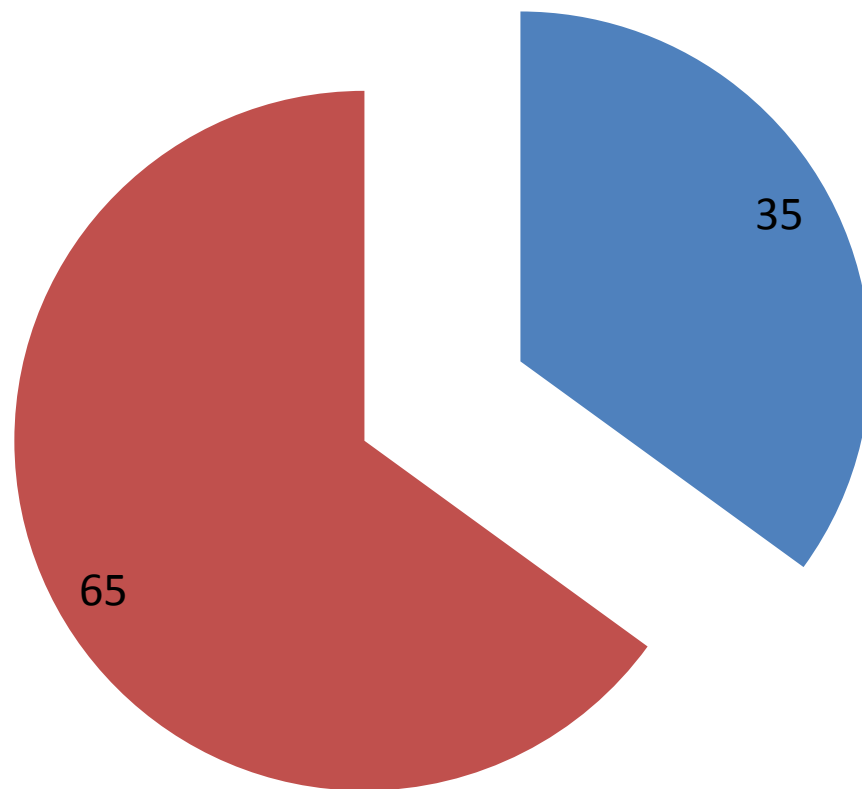
*"It's a good area, it's a little bit of country in the middle of the city."*





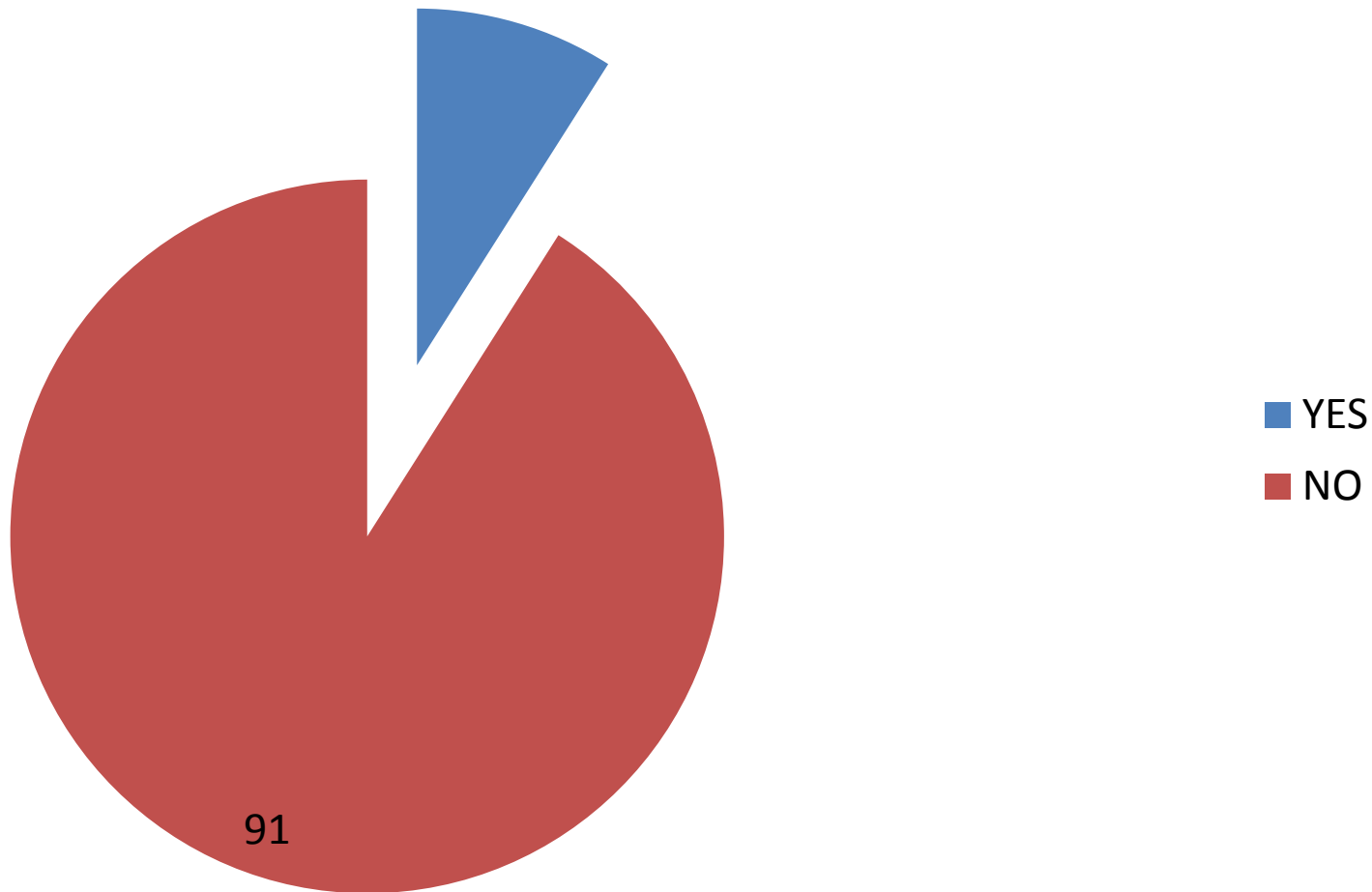


# Before the improvements were you looking to move from here in the next 5 years? (percent)



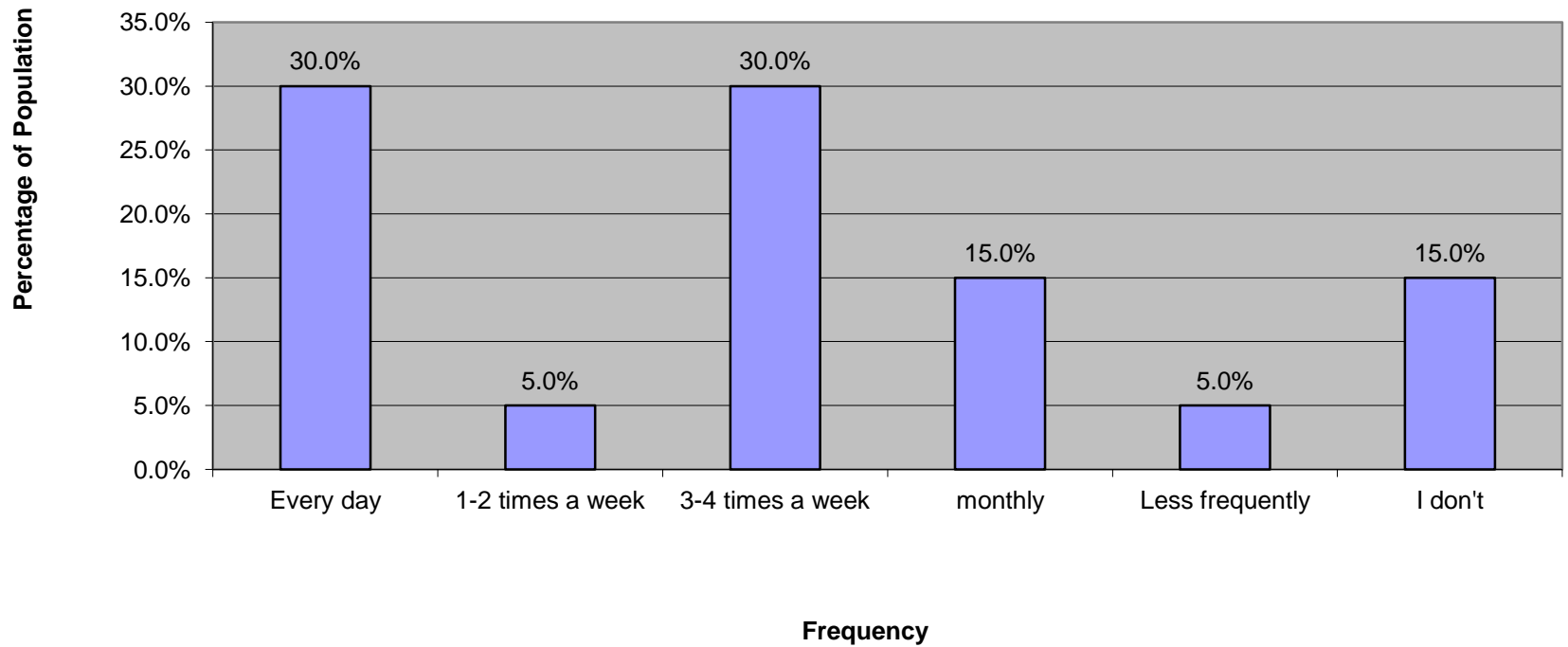
■ YES  
■ NO

# Now that the improvements have happened are you looking to move in the next 5 years? (percent)





### How often do you use the space now it has been improved?



- Where is The Mersey Forest?
- Why was it set up?
- What do we do?
- 20 years on - progress?
- **A look ahead**



# Green Infrastructure – our view

Our life support system – the network green & blue spaces that lie within & between our cities, towns & villages and provide multiple social, economic & environmental benefits





# Setting the Scene for Wirral Waters









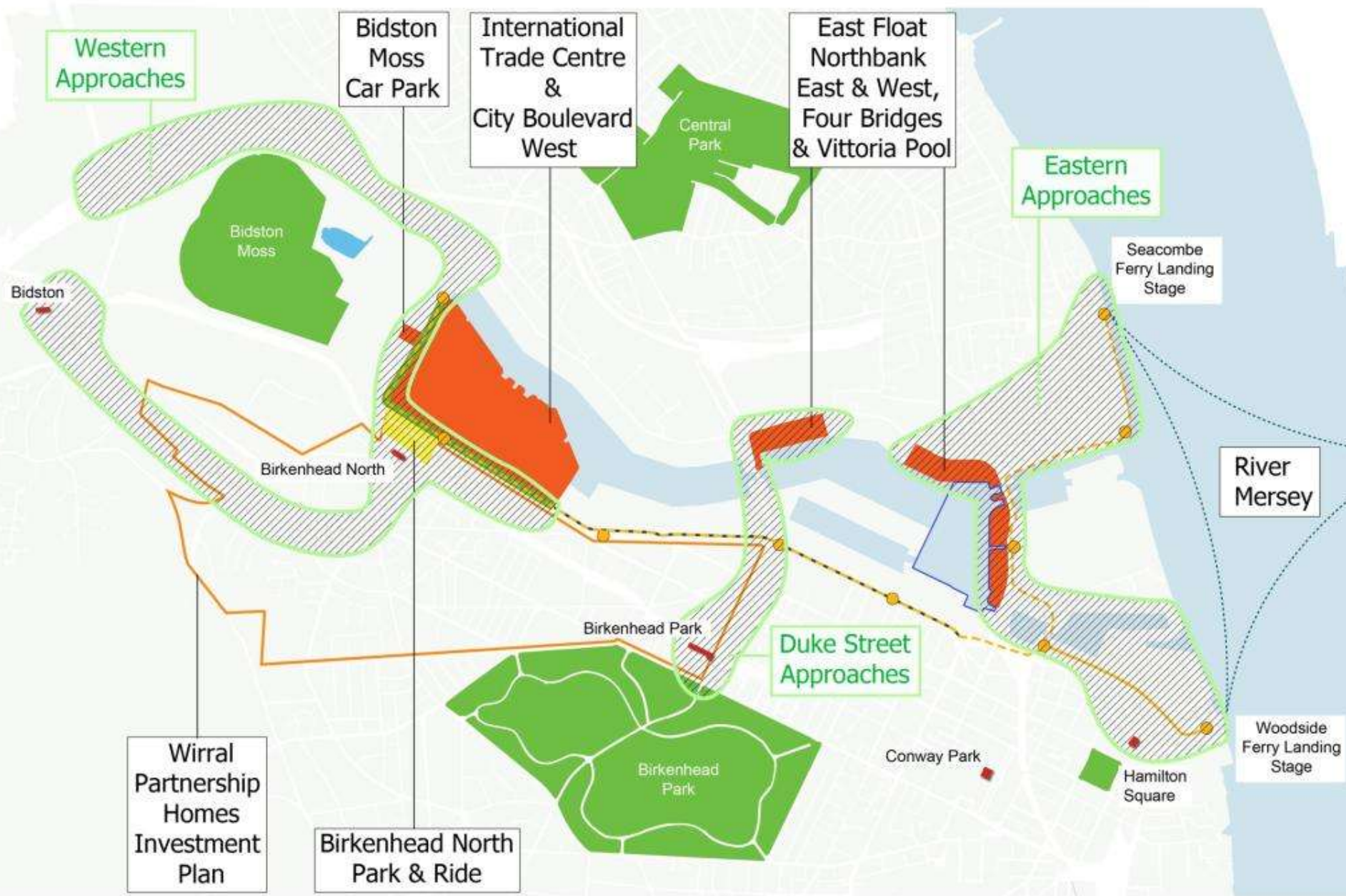




**Figure 1** Example of poor quality environment in the area around the Wirral Waters development



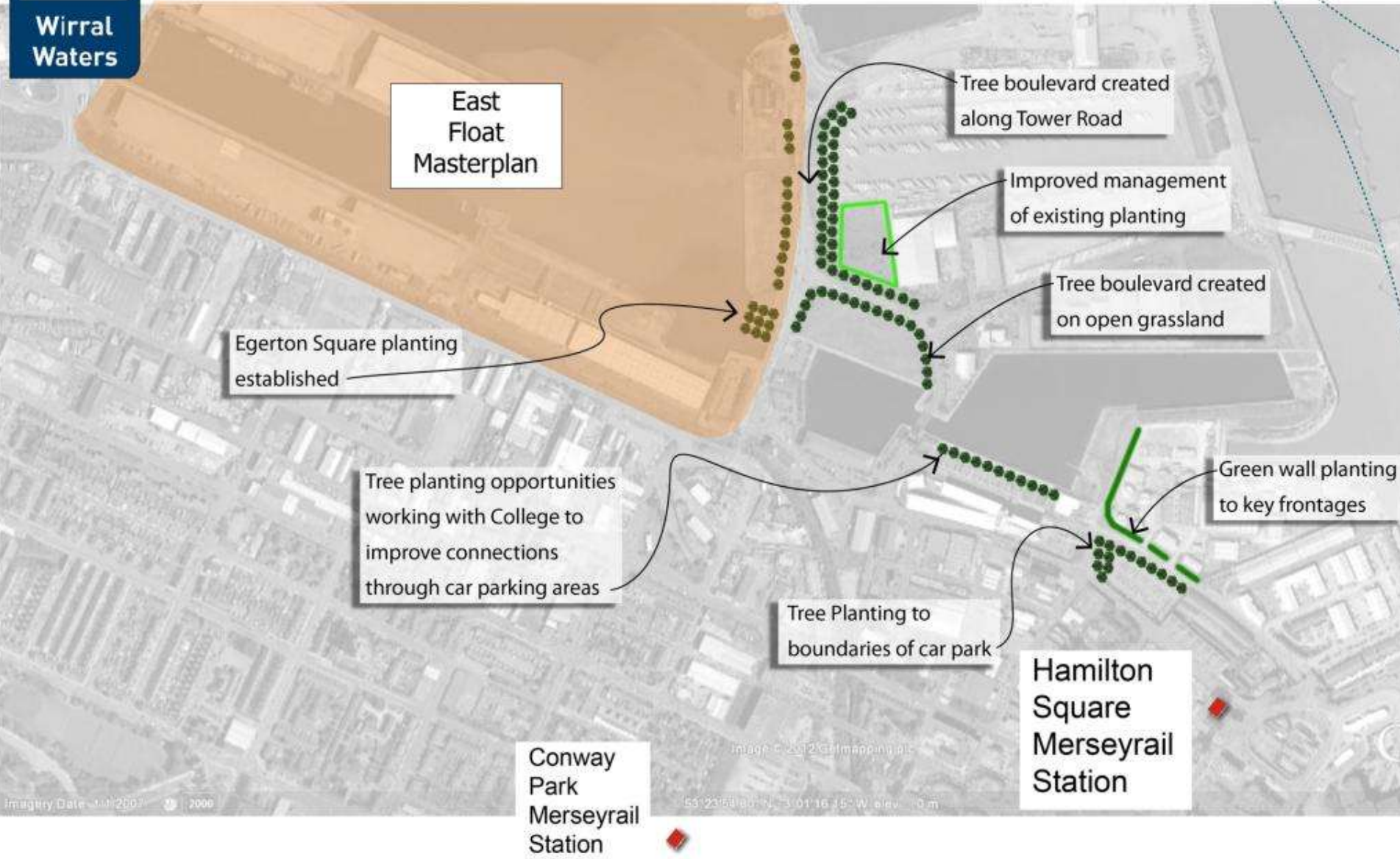




KeyProjects - triggers
 
 SSFG Priority Areas



# Seacombe Ferry Landing Stage









# The partnership is on track...

## Challenges

- Fewer resources
- More to do!
- Different competition
- Increasing focus on jobs and business
- Increasing land pressure

## Opportunities

- We are still here!
- We have a plan
- Growth will come
- Think long term
- Act and react now!
- Engage new partners
- Cooperate and learn

# Find out more

- Become a “Supporter”
- Sign up for a newsletter
- Get in touch
- Joint projects
  - GIFT-T!
  - ForeStClim
  - Pure Hubs
- Come and see!
  - You know where we are now!

## Support us (it's free)

Support us (it's free) so we can  
Keep planting trees



First Name

Surname

Email

Postcode

Get quarterly e-newsletter

**Sign up**

Join **1207** fellow supporters

 What does 'being a supporter' mean?  
It means adding your name to The Mersey Forest's list of supporters to show your backing for our work to create a greener, healthier Merseyside and Cheshire.

 Why should I become a supporter?  
It will improve your local environment - the more supporters we have, the more trees we can plant. You can also receive news, events and goodies with our optional e-newsletter.

 What's the downside?  
None. It's free, it only takes a second, and you choose how often (or not at all) you want to hear from us.

So sign up to make our region greener!

**THANK YOU**



## More things to do

Walks, bike rides and more

Find places to go and woodlands to explore across The Mersey Forest area. [Read more...](#)



Join a community group

Find out about groups near you. Meet new people, enjoy the fresh air & learn new skills. [Read more...](#)



Public Events

Find out about green events across the Forest area brought to you by a range of partners. [Read more...](#)



Get our newsletter

Subscribe to our popular quarterly e-newsletter or browse previous editions since 2009. [Read more...](#)



Learn green skills

Learn how to plant a tree, create a wildlife pond and more with our free printable guides. [Read more...](#)



Dedicate a tree

More than 15,000 trees in local community woodlands have been dedicated as gifts so far. [Read more...](#)





**Daniel H. Burnham**

Make no little plans. They have no magic to stir men's blood...